

StarLight8S

StarLight8S

Compact 8,4" TFT-Display with SVGA-Resolution 800x600 for PC-Graphics and Video-Signals

At the development of the Nickl StarLight series all experiences made with the SunLight series are collected. Then the main features of them are inherited in order to offer a very cost-effective display.

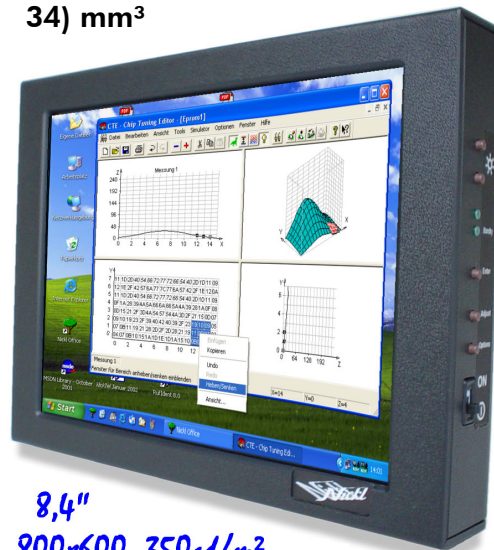
In that way, the starter model StarLight8S was developed for cost-sensitive applications. It offers all what is necessary to work effectively in the research and development on automobiles. For example its resolution of 800 x 600 dots allows working with graphical user interfaces and its high brightness of 350 cd/m² eases reading the display content. Even mixed application with PC graphics and camera is possible because the user can select between the inputs.

Its very compact outer dimensions and the available accessories ease the integration on most places and a direct connection to the automotive mains eliminates the need of a DC/DC converter.

Applications:

- Research and development of vehicles
- Testing chassis dynamic and bake systems
- Process Visualisation
- Visualising of data when measuring environmental data by use of aeroplanes
- Supervisory

- High brightness of 350cd/m²
- Supports PC-Graphics and Video
- Separate inputs for PC and Video selectable for image processing purposes
- Wide supply range of 9..36V DC
- Compact outer dimensions (212 x 162 x 34) mm³



8,4"
800x600 350cd/m²



Nickl Elektronik-Entwicklung GmbH
Eisackstraße 22 86165 Augsburg Germany
Tel +49/821/450344-0
Fax +49/821/450344-49



Elektronik-Entwicklung

www.nickl.de

Displays are our
business...

StarLight8S

Technical Data

| | |
|-------------------------|-----------------------------------------------------------------------------------------------------------------------------------------------------------|
| Display | 213,36 mm (8,4 ") , active area (170,4 x 127,8) mm ² |
| Resolution | 800x600 pixels |
| Brightness | 5...350 cd/m ² , up-/down-keys, automatic adaption to environmental brightness |
| Optical characteristics | Contrast: 250:1, response time rising/falling: 50/50ms |
| Technology | TFT-Stripe-RGB, 6-bit per color (262k colors) |
| Video Inputs | DOS Text, VGA 640x480, SVGA 800x600, XGA 1024x768, 56..85 Hz, RGB analog, 0,7Vpp, DC-Restore, H- und V-Sync NTSC, PAL, SECAM als S-Video, 75 Ohm |
| Touch Panel | on request for higher volume |
| Power Supply | 9..36 V, no galvanic de-coupling, polarity-save typ. 15 W at full brightness, power-down on loss of video signal |
| Connectors | 1. PC graphics 15-pin HD D-Sub receptacle 2. S-Video Mini-DIN 4 3. Supply: 5-pin D-Sub Header 4. Touch panel: 9-pin D-Sub header optional |
| Case | Polystyrol black, further colors on request WxD: (212 x 162 x 34) mm ³ w/o touch option, (212 x 162 x 36) mm ³ with touch option |
| Operating temperature | 0..+55 °C |
| Storage temperature | -25..+60 °C |
| Mass | 860 g |

Accessories

- 1EMSL10XH-x
Holder for car and laboratories
- 1EZKA-HS15HS15-x-HQ
Cable for power supply with two banana plugs,
L=2m or 7m
- 1EZKA-DB5BAN2-x
Video signal cable with ferrite bead, L=1,5m, 2m,
5m, 7m or 10m
- 1EZPAS-DB5
Power connector, D-Sub5 high-current, receptacle for
soldering

Order Codes

- 1EMSL8S
TFT-display, 8.4", StarLight8S, 800x600, Vin=9..36V,
350cd/m², multivideo standards, particular for mobile use
- Further variants on request -

